

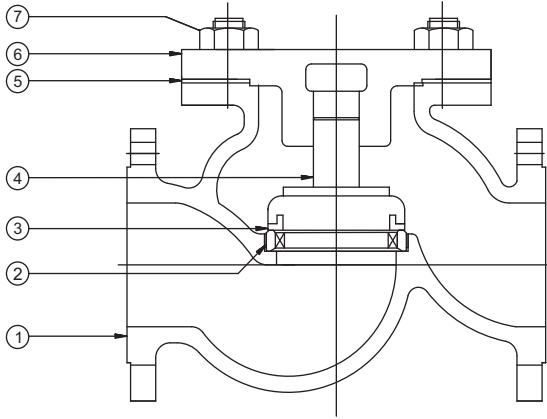
**CAST IRON HORIZONTAL CHECK VALVES- EN 12334**

**PN 10, PN 16**

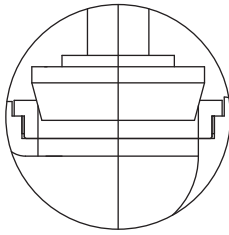
**SPECIFICATIONS**

**RIGHT ANGLE PATTERN, BOLTED COVER, FLANGES AS PER BS 4504 DIN 2532 OR 2533- AS APPLICABLE**

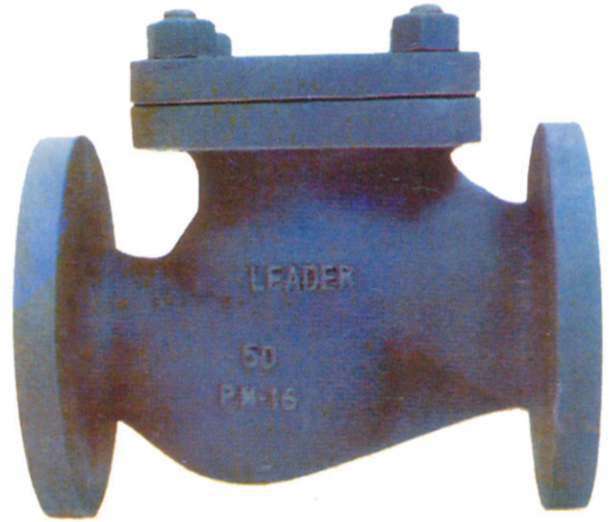
**PRESSURE-TEMPERATURE RATINGS**



FLAT TYPE DISC



PLUG TYPE DISC



**STANDARD MATERIAL COMBINATION**

PART NO	QTY.	DESCRIPTION	MATERIALS	
			Cu-ALLOY TRIM	S.S TRIM
1	1	BODY	C.I TO EN 1561 Gr. GJL200	C.I TO EN 1561 Gr. GJL200
2	1	BODY SEAT RING	G.M. TO EN 1982 Gr. CC491K	S.S TO BS 970 Gr. 410 S21/ASTM A182 Gr. F6a OR THEIR Eq.
3	1	DISC	WITH INTEGRAL FACE G.M. TO EN 1982 Gr. CC491K	S.S TO BS 970 Gr. 410 S21/ASTM A182 Gr. F6a/ASTM A217 Gr. Ca15 OR THEIR Eq.
		WITH SEPARATE FACING RING C.I TO EN 1561 Gr. GJL200	C.I TO EN 1561 Gr. GJL200	
4	1	DISC FACING RING	G.M. TO EN 1982 Gr. CC491K	S.S TO BS 970 Gr. 410 S21/ASTM A182 Gr. F6a OR THEIR Eq.
5	1	GASKET	SUITABLE FOR THE DUTY	SUITABLE FOR THE DUTY
6	1	COVER	C.I TO EN 1561 Gr. GJL200	C.I TO EN 1561 Gr. GJL200
7	1	STUDS & NUTS	CARBON STEEL TO BS 916	CARBON STEEL TO BS 916

**PRESSURE/ TEMPERATURE RATINGS TO BS 5153**

NOMINAL PRESSURE	MAX. PERMISSIBLE GAUGE WORKING PRESSURE °C				
	-10 TO 120 °C	150 °C	180 °C	200 °C	220 °C
PN 10	10 bar	9.2 bar	8.5 bar	8.0 bar	8.0 bar
PN 16	16 bar	14.8 bar	13.9 bar	13.0 bar	13.0 bar

NOTE: The above data is subject to change without notice.

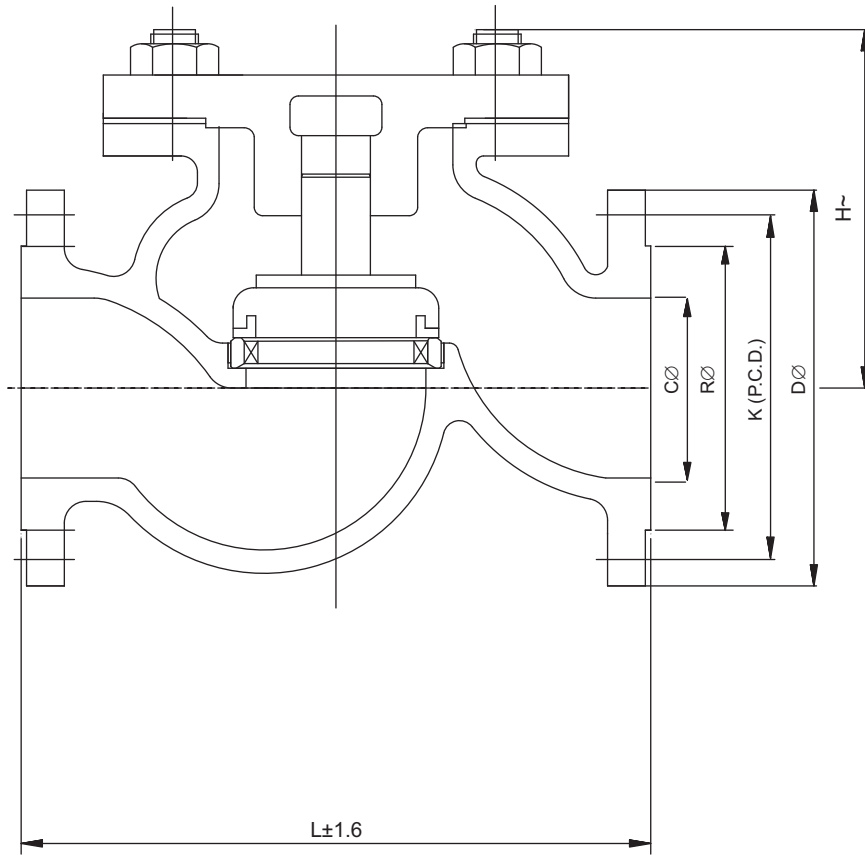


FIG. NO. CI019

**CATALOGUE FIG. NOS.**

ITEM	SIZES	FIG. NO.	END DETAILS
CAST IRON HORIZONTAL CHECK VALVE- BS PN 16 (S.S. TRIM)	≤ 150mm	CI-019 RF	FLANGED ENDS TO DIN 2533 PN-16 RF

**DIMENSIONAL DATA**

DN NPS	15 ½	20 ¼	25 1	32 1-¼	40 1 ½	50 2	65 2-½	80 3	100 4	125 5	150 6	200 8	250 10	300 12	
L(RF)	130	150	160	180	200	230	290	310	350	400	480	600	730	850	
H	85	85	90	100	115	130	160	170	190	210	282	310	325	380	
CØ	15	20	25	32	40	50	65	80	100	125	150	200	250	300	
RØ	45	58	68	78	88	102	122	138	158	188	212	268	320	370	
K (P.C.D.)	65	75	85	100	110	125	145	160	180	210	240	295	350	400	
DØ	95	105	115	140	150	165	185	200	220	250	285	340	395	445	
ITEM CODE NOS.	Aprox.Wt. ▲	4.000	5.080	6.100	10.42	13.90	16.70	28.07	42.10	58.50	87.10	117.30	205.00	345.00	516.00
	<b>Pn16</b> (S.S.TRIM)	CI 019 D	CI 019 F	CI 019 G	CI 019 H	CI 019 I	CI 019 J	CI 019 K	CI 019 L	CI 019 N	CI 019 O	CI 019 P	-	-	-

**TEST PRESSURES**

NOMINAL PRESSURE RATING	SHELL TEST (HYDROSTATIC)	SEAT TEST (HYDROSTATIC)	STANDARD NO.
PN 10	15 bar	10 bar	BS 5153
PN 16	24 bar	16 bar	

(▲WEIGHT GIVEN IN KGS)

NOTE: The above data is subject to change without notice.