

# Cu-ALLOY HORIZONTAL LIFT CHECK VALVES - BS 5154

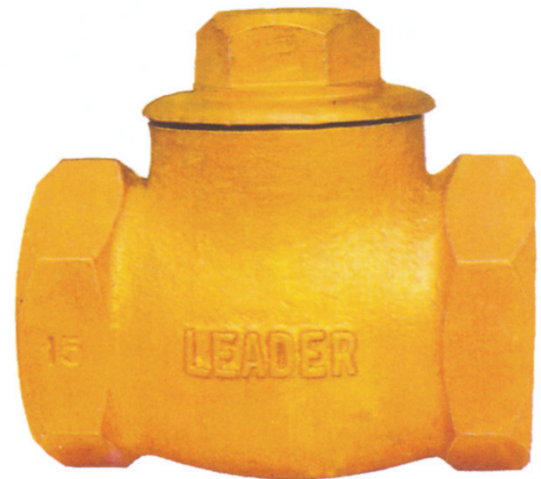
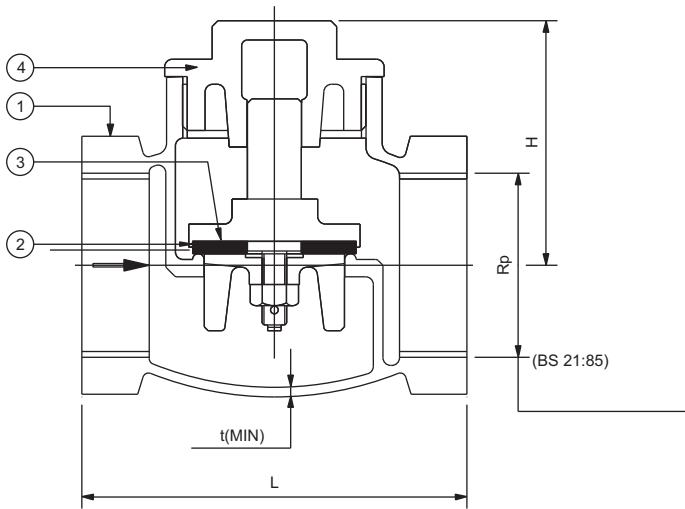
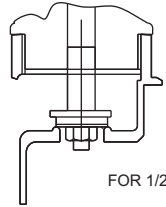
PN 20

## SPECIFICATIONS

SCREWED IN COVER, INTEGRAL SEAT, RESILIENT SEATED, SCREWED FEMALE BSP PARALLEL THREADS TO BS 21 OTHER FORMS OF THREADS CAN BE PROVIDED ON REQUEST.

## PRESSURE-TEMPERATURE RATINGS

20 bar FROM - 10°C TO 100°C



## STANDARD MATERIAL COMBINATION

| P.NO. | QTY. | DESCRIPTION                | MATERIALS | SPECIFICATIONS     |
|-------|------|----------------------------|-----------|--------------------|
| 1     | 1    | COVER                      | G.M       | EN 1982 Gr. CC491K |
| 2     | 1    | BODY                       | G.M.      | EN 1982 Gr. CC491K |
| 3     | 1    | DISC                       | G.M.      | EN 1982 Gr. CC491K |
| 4     | 1    | RESILIENT SEAT (RENEWABLE) | RUBBER    |                    |

## DIMENSIONAL DATA

| NPS            | 1/2      | 3/4      | 1        | 1 1/4    | 1 1/2    | 2        | 2 1/2    | 3        | 4        |
|----------------|----------|----------|----------|----------|----------|----------|----------|----------|----------|
| L              | 55.5     | 66.5     | 78       | 91.5     | 100      | 123      | 156.5    | 178      | 206      |
| H              | 35       | 40       | 51       | 61       | 70       | 80       | 90       | 110      | 115      |
| t              | 1.8      | 2.0      | 2.1      | 2.4      | 2.5      | 2.8      | 3.2      | 80       | 100      |
| Aprox. Wt. ^   | 0.290    | 0.480    | 1.080    | 1.300    | 1.750    | 3.300    | 6.100    | ----     | ----     |
| ITEM CODE NOS. | GM 036 D | GM 036 F | GM 036 G | GM 036 H | GM 036 I | GM 036 J | GM 036 K | GM 036 L | GM 036 N |

## TEST PRESSURES

| STANDARD NO.      | SHELL TEST (HYDROSTATIC) | SEAT TEST     |           |
|-------------------|--------------------------|---------------|-----------|
|                   |                          | (HYDROSTATIC) | PNEUMATIC |
| BS 12266 PART - 1 | 30 bar                   | 22 bar        | 6.9 bar   |

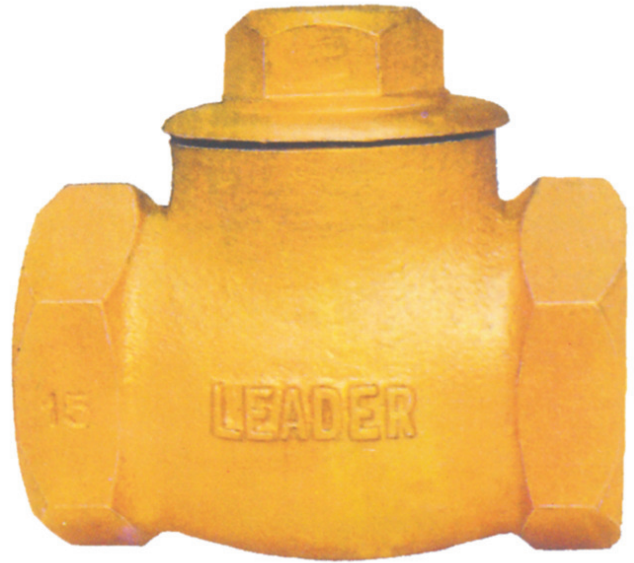
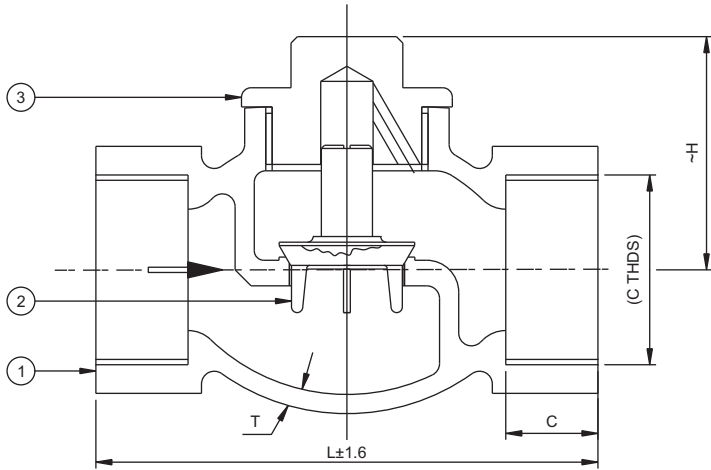
NOTE: The above data is subject to change without notice.

(^WEIGHT GIVEN IN KGS)

**SPECIFICATIONS**

SCREWED IN COVER, INTEGRAL SEAT, SCREWED FEMALE BSP PARALLEL THREADS TO BS21. OTHER FORMS OF THREADS CAN BE PROVIDED ON REQUEST

**PRESSURE-TEMPERATURE RATINGS**



**STANDARD MATERIAL COMBINATION**

| P. NO. | QTY. | DESCRIPTION | MATERIALS | SPECIFICATIONS     |
|--------|------|-------------|-----------|--------------------|
| 1.     | 1    | BODY        | G.M.      | EN 1982 Gr. CC491K |
| 2.     | 1    | DISC        | G.M.      | EN 1982 Gr. CC491K |
| 3.     | 1    | COVER       | G.M.      | EN 1982 Gr. CC491K |

**DIMENSIONAL DATA**

| NPS            | 1/4      | 3/8      | 1/2      | 3/4       | 1        | 1 1/4    | 1 1/2    | 2        | 2 1/2    | 3        | 4        |
|----------------|----------|----------|----------|-----------|----------|----------|----------|----------|----------|----------|----------|
| L              | 40       | 45       | 57       | 68        | 78       | 95       | 103      | 125      | 157      | 178      | 206      |
| H              | 23       | 26       | 32       | 36.5      | 50       | 53       | 63.5     | 71.5     | 76       | 110      | 115      |
| C              | 1/4"     | 3/8"     | 1/2"     | 3/4"      | 1"       | 1-1/2"   | 1-1/2"   | 2"       | 2-1/2"   | 3"       | 4"       |
| T              | 1.7      | 1.8      | 1.9      | 2.1       | 2.4      | 2.6      | 2.8      | 3.2      | 3.7      | 4.1      | 4.6      |
| Aprox. Wt. ^   | ----     | ----     | 0.365    | 0.550     | 0.750    | 1.260    | 1.690    | 2.815    | 4.565    | 6.210    | 12.600   |
| ITEM CODE NOS. | GM 039 B | GM 039 C | GM 039 D | GM 0039 F | GM 039 G | GM 039 H | GM 039 I | GM 039 J | GM 039 K | GM 039 L | GM 039 N |

**TEST PRESSURES**

| STANDARD NO.     | SHELL TEST (HYDROSTATIC) | SEAT TEST (HYDROSTATIC) |
|------------------|--------------------------|-------------------------|
| BS 12266 PART- 1 | 37.5 bar                 | 27.5 bar                |

NOTE: The above data is subject to change without notice.

(^WEIGHT GIVEN IN KGS)

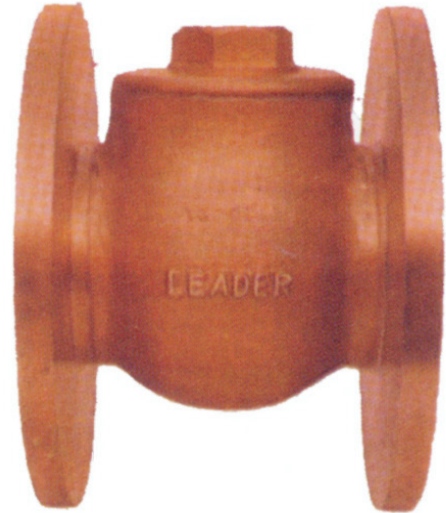
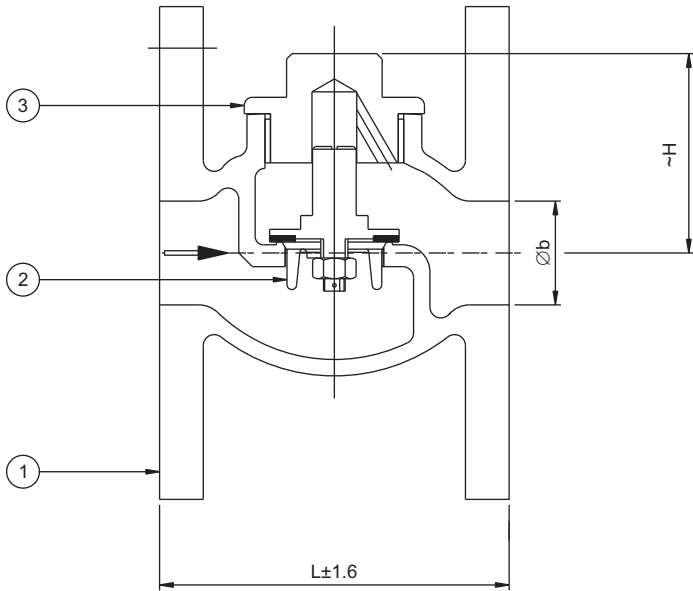
# Cu-ALLOY HORIZONTAL LIFT CHECK VALVES

**PN 25, CLASS 150**

## SPECIFICATIONS

SCREWED IN COVER, INTEGRAL SEAT, SEAT RENEWABLE DISC, FLANGED ENDS AS PER BS 4504 PN 25/BS 10 TABLE F

## PRESSURE-TEMPERATURE RATINGS



### STANDARD MATERIAL COMBINATION

| P. NO. | QTY. | DESCRIPTION | MATERIALS | SPECIFICATIONS     |
|--------|------|-------------|-----------|--------------------|
| 1.     | 1    | BODY        | G.M.      | EN 1982 Gr. CC491K |
| 2.     | 1    | DISC        | G.M.      | EN 1982 Gr. CC491K |
| 3.     | 1    | COVER       | G.M.      | EN 1982 Gr. CC491K |

### DIMENSIONAL DATA

| DN<br>NPS            | 15<br>½ | 20<br>¾  | 25<br>1  | 32<br>1 ¼ | 40<br>1 ½ | 50<br>2  | 65<br>2 ½ | 80<br>3  | 100<br>4 |          |
|----------------------|---------|----------|----------|-----------|-----------|----------|-----------|----------|----------|----------|
| L                    | 55      | 64       | 75       | 82        | 98        | 110      | 156       | 162      | 196      |          |
| Øb                   | 12.7    | 20       | 25       | 32        | 40        | 50       | 65        | 80       | 100      |          |
| H                    | 35      | 40       | 51       | 61        | 70        | 80       | 90        | 110      | 115      |          |
| ITEM CODE NOS.       | PN 25   | GM 041 D | GM 041 F | GM 041 G  | GM 041 H  | GM 041 I | GM 041 J  | GM 041 K | GM 041 L | GM 041 N |
| Aprox.Wt. ^ (CL-150) | 1.440   | 1.880    | 2.380    | 3.250     | 4.860     | 6.510    | 11.000    | 12.100   | 18.85    |          |

| NOMINAL PRESSURE<br>ACCORDING<br>TO PN OR<br>CLASS DESIGNATION | END DETAILS                       | TEST PRESSURES |             |           | STANDARD       |
|--|-----------------------------------|----------------|-------------|-----------|----------------|
|  |                                   | SHELL TEST     | SEAT TEST   |           |                |
|  |                                   | HYDROSTATIC    | HYDROSTATIC | PNEUMATIC |                |
| PN 25  | FLANGED ENDS AS PER BS 4504 PN 25 | 37.5 bar       | 27.5 bar    | 6.9 bar   | BS 6755 PART-1 |
| CLASS 150  | FLANGED ENDS AS PER BS 10 TABLE F | 30 bar         | 22 bar      | 6.9 bar   |                |

NOTE: The above data is subject to change without notice.

(^WEIGHT GIVEN IN KGS)

**SPECIFICATIONS**

UNION COVER, RENEWABLE SEAT & DISC, SCREWED FEMALE BSP PARALLEL THREADS TO BS 21 OTHER FORMS OF THREADS CAN BE PROVIDED ON REQUEST.

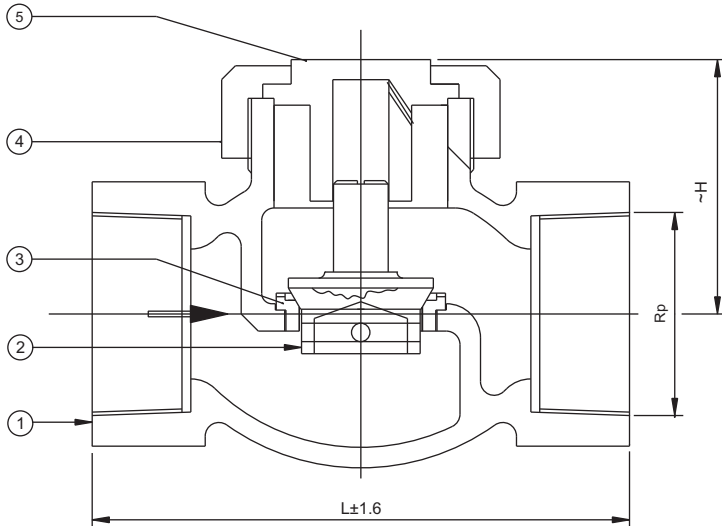


FIG NO : GM 042



**STANDARD MATERIAL COMBINATION**

| P. NO. | QTY. | DESCRIPTION    | MATERIALS     | SPECIFICATIONS          |
|--------|------|----------------|---------------|-------------------------|
| 1.     | 1    | BODY           | G.M.          | EN 1982 Gr. CC491K      |
| 2.     | 1    | DISC           | 13% Cr. STEEL | ASTM A276 : 06 TYPE 410 |
| 3.     | 1    | BODY SEAT RING | 13% Cr. STEEL | ASTM A276 : 06 TYPE 410 |
| 4.     | 1    | COVER          | G.M.          | EN 1982 Gr. CC491K      |
| 5.     | 1    | UNION          | G.M.          | EN 1982 Gr. CC491K      |

**DIMENSIONAL DATA**

| NPS                   | 1/4      | 3/8      | 1/2      | 3/4      | 1        | 1 1/4    | 1 1/2    | 2        | 2 1/2    | 3        | 4     |
|-----------------------|----------|----------|----------|----------|----------|----------|----------|----------|----------|----------|-------|
| L                     | 55.5     | 60       | 70       | 85       | 100      | 108      | 122      | 148.5    | 166      | 203      | 247.3 |
| H                     | 32.5     | 32.5     | 42       | 50       | 55       | 61       | 72       | 87       | 96.3     | 105      | 55    |
| Rp                    | 1/4"     | 3/8"     | 1/2"     | 3/4"     | 1"       | 1-1/4"   | 1-1/2"   | 2"       | 2-1/2"   | 3"       | 4"    |
| Aprox. Wt. ^          | ----     | ----     | 0.570    | 0.960    | 1.470    | 2.300    | 3.150    | 5.300    | 7.400    | 10.200   | ----  |
| <b>ITEM CODE NOS.</b> | GM 042 B | GM 042 C | GM 042 D | GM 042 F | GM 042 G | GM 042 H | GM 042 I | GM 042 J | GM 042 K | GM 042 L | ----  |

**TEST PRESSURES**

| STANDARD NO.     | SHELL TEST (HYDROSTATIC) | SEAT TEST (HYDROSTATIC) |
|------------------|--------------------------|-------------------------|
| BS 12266 PART- 1 | 37.5 bar                 | 27.5 bar                |

NOTE: The above data is subject to change without notice.

(^WEIGHT GIVEN IN KGS)