

Cu-ALLOY HORIZONTAL LIFT CHECK VALVES

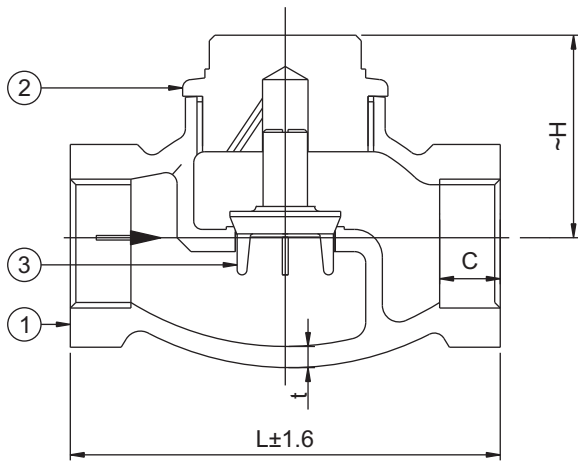
PN 16

SPECIFICATIONS

SCREWED IN COVER, INTEGRAL SEAT, SCREWED FEMALE THREADS TO IS : 554 (PARALLEL)

PRESSURE-TEMPERATURE RATINGS

CLASS-1 : BODY : 15.3 BAR BACK SEAT & SEAT : 10.2 BAR
 CLASS-2 : BODY : 24.48 BAR BACK SEAT & SEAT : 16.32 BAR
 TEMPERATURE UP TO 45°C



STANDARD MATERIAL COMBINATION

P. NO.	QTY.	DESCRIPTION	MATERIALS	SPECIFICATIONS
1.	1	BODY	G.M.	IS 318 LTB2
2.	1	COVER	G.M.	IS 318 LTB2
3.	1	DISC	G.M.	IS 318 LTB2

DIMENSIONAL DATA

NPS	1/4	3/8	1/2	3/4	1	1 1/4	1 1/2	2	2 1/2	3	4	5	6	
L	40	40	45	55	67	80	89	110	134	159	190	235	267	
L1	-	-	24	31	35	43	48	58	70	81	112	-	-	
∅b	9.5	9.5	11	16	22.5	29	35	45	63.5	76.2	96	122	148	
C	8	8	9.5	11.5	13	14	16	18.5	22	27	31.5	34	35	
H	23	23	25	30	40	50	55	60	75	85	110	130	145	
H1	-	-	25	30	40	45	50	65	90	55	110	-	-	
Aprox. Wt. ^	--	0.1	0.160	0.340	0.480	0.890	1.180	1.760	3.425	5.130	11.400	17.250	30.300	
ITEM CODE NOS.	CL-1	IS 021 B	IS 021 C	IS 021 D	IS 021 F	IS 021 G	IS 021 H	IS 021 I	IS 021 J	IS 021 K	IS 021 L	IS 021 N	IS 021 O	IS 021 P

NOMINAL PRESSURE ACCORDING TO PN OR CLASS DESIGNATION

TEST PRESSURES

	SHELL TEST (HYDROSTATIC)	SEAT TEST (HYDROSTATIC)	STANDARD NO.
	CLASS-1	15.3 bar	
CLASS-2	24.48 bar	16.32 bar	

NOTE: The above data is subject to change without notice.

(^ WEIGHT GIVEN IN KGS)