

# Cu-ALLOY SWING CHECK VALVES - BS 5154

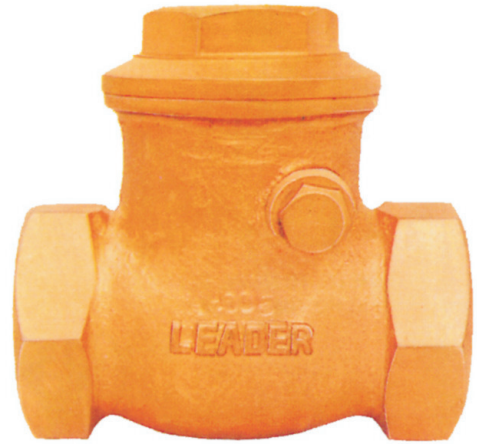
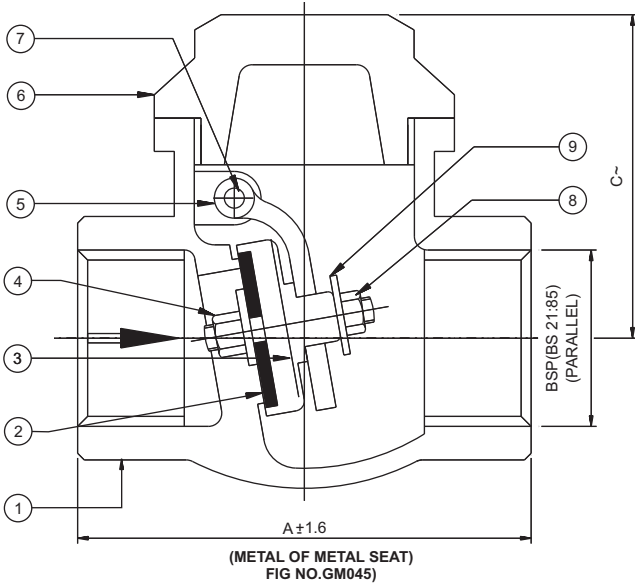
PN 20

## SPECIFICATIONS

SCREWED IN COVER, INTEGRAL SEAT SCREWED FEMALE BSP PARALLEL THREADS TO BS 21. OTHER FORMS OF THREADS CAN BE PROVIDED ON REQUEST.

## PRESSURE-TEMPERATURE RATINGS

METAL TO METAL SEAT  
 20 bar AT-10°C to 100°C  
 9 bar AT-180°C  
 RESILIENT SEAT (RESTRICTED TO MAX. TEMP. OF 100°C)  
 20 bar FROM - 10°C TO 100°C



## STANDARD MATERIAL COMBINATION

P.NO.	Qty.	DESCRIPTION	MATERIALS	SPECIFICATIONS
1	1	BODY	G.M.	EN 1982 Gr. CC491K
2	1	DISC	G.M.	EN 1982 Gr. CC491K
3	1	HINGE	G.M.	EN 1982 Gr. CC491K
4	1	HINGE COVER	BRASS	DIN EN 12165:98 CW617N
5	1	COVER	G.M	EN 1982 Gr. CC491K
6	1	HINGE NUT	BRASS	DIN EN 12165:98 CW617N
7	1	SIDE PLUG	G.M.	EN 1982 Gr. CC491K
8	1	RESILIENT SEAT FACE	RUBBER	----
9	1	RESILIENT SEAT RETAINER	G.M.	EN 1982 Gr. CC491K
10	1	SEAT NUT	BRASS	Cz122 OF BS 2872 OR BS 2874

## DIMENSIONAL DATA

NPS	1/2	3/4	1	1 1/4	1 1/2	2	2 1/2	3	4
L	57	69	81	94	108	130	154	189	223
∅b	12.7	19	25	32	38	50	63.5	76.2	100
C	12	13	15	16	16	19.5	21	23	29
H	40	50	52	65	70	78	100	106	130
Aprox. Wt. ^	0.400	0.630	0.800	1.150	1.850	2.685	4.795	7.600	13.440
ITEM CODE NOS.	GM 045 D	GM 045 F	GM 045 G	GM 045 H	GM 045 I	GM 045 J	GM 045 K	GM 045 L	GM 045 N

## TEST PRESSURES

STANDARD NO.	SHELL TEST (HYDROSTATIC)	SEAT TEST (HYDROSTATIC)
BS 12266 PART- 1	30 bar	22 bar

NOTE: The above data is subject to change without notice.

(^WEIGHT GIVEN IN KGS)

# Cu-ALLOY SWING CHECK VALVES

**PN 20, CLASS 150**

## SPECIFICATIONS

SCREWED IN COVER, INTEGRAL SEAT FLANGED ENDS AS PER BS 4504 PN25/BS 10 TABLE F.

## PRESSURE-TEMPERATURE RATINGS

### METAL TO METAL SEAT

#### PN 20

20 bar AT -10°C TO 100°C

9 bar AT - 180°C

**RESILIENT SEAT (RESTRICTED TO MAX. TEMP. OF 100°C)**

#### PN 20

20 bar FROM - 10°C TO 100°C

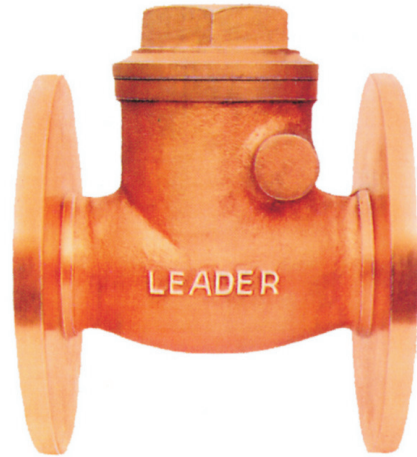
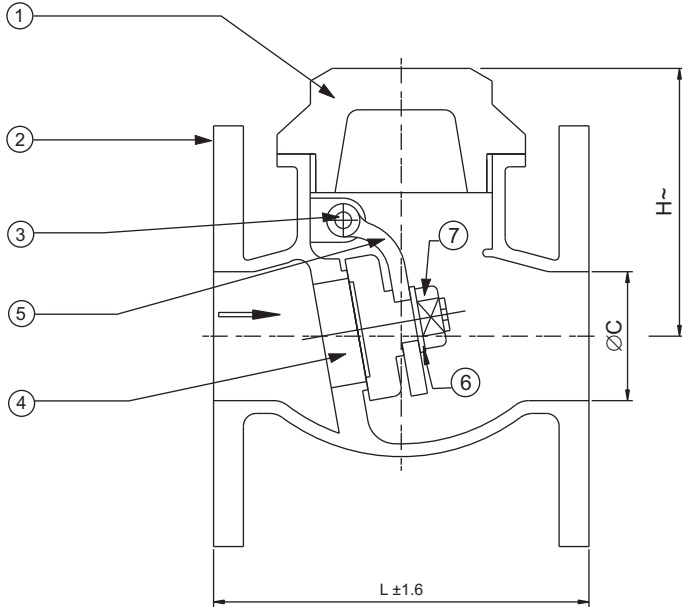
#### CLASS 150

280 PSI FROM -10°C TO 100°C

150 PSI at 186°C

#### CLASS 150

280 psi from - 10°C to 100°C



## STANDARD MATERIAL COMBINATION

P.NO.	Qty.	DESCRIPTION	MATERIALS	SPECIFICATIONS
1	1	COVER	G.M	BSEN 1982 Gr. CC491K
2	1	BODY	G.M.	BSEN 1982 Gr. CC491K
3	1	HINGE PIN	BRASS ROD	DIN EN 12165:98 CW617N
4	1	DISC	G.M.	BSEN 1982 Gr. CC491K
5	1	HINGE	G.M.	BSEN 1982 Gr. CC491K
6	1	WASHER	BRASS ROD	DIN EN 12165:98 CW617N
7	1	NUT	BRASS/G.M.	DIN EN 12165:98 CW617N/ BSEN 1982 Gr. CC491K

## DIMENSIONAL DATA

DN NPS	15 1/2	20 3/4	25 1	32 1 1/4	40 1 1/2	50 2	65 2 1/2	80 3	100 4	
L	83	89	102	112	124	144	169	178	217	
H	50	62	67	75	85	85	110	120	165	
C	13	19	25.5	32	38	51	63.5	76	101.5	
ITEM CODE NOS.	CLASS 150	GM 047 D	GM 047 F	GM 047 G	GM 047 H	GM 047 I	GM 047 J	GM 047 K	GM 047 L	GM 047 N
Aprox.Wt. ^ (CL-150)	1.400	1.945	3.270	3.500	4.440	6.500	12.000	13.200	22.800	

NOMINAL PRESSURE ACCORDING TO PN OR CLASS DESIGNATION	END DETAILS	TEST PRESSURES		
		SHELL TEST (HYDROSTATIC)	SEAT TEST (HYDROSTATIC)	STANDARD
PN 20	FLANGED ENDS AS PER BS 4504 PN 25	30 bar	22 bar	BS 12266 PART-1
CLASS 150	FLANGED ENDS AS PER BS 10 TABLE F	30 bar	22 bar	

NOTE: The above data is subject to change without notice.

(^ WEIGHT GIVEN IN KGS)